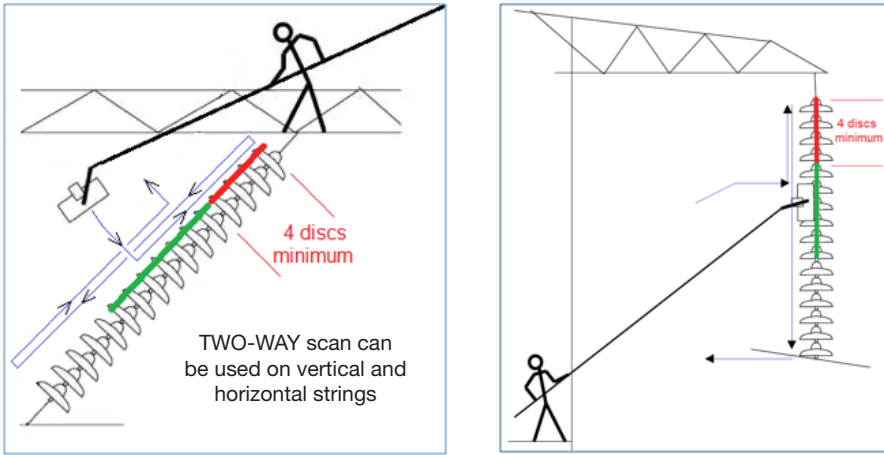


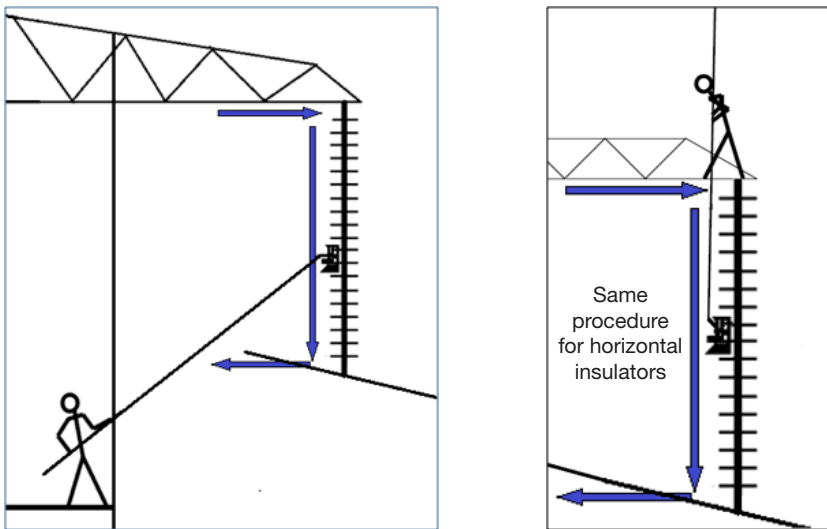
Insulator Scanning Procedure

- A) **Porcelain Tester**
TWO-WAY scan (2 curves) OR **ONE-WAY** scan



Place initially the tester in the **GREEN** zone,
a minimum of 4 discs away from the low voltage end

- B) **Composite Tester**
The composite tester uses only **ONE-WAY** scan
(No backward motion)



Quick Start Guide for Porcelain and Composite Insulator Testers

© Positron Inc.

Positron Inc., 5101 Buchan, Suite 220
Montreal, Quebec, H4P 2R9 Canada • Tel: +1-514-345-2220
www.positronpower.com



www.positronpower.com

Quick Start Guide

Porcelain Tester & Composite Tester

• BEFORE a Testing Session

- Enter a list of Insulator Identifications
- Check the Bluetooth link
- Check Date and Time of the Tablet/ PC
- Recharge batteries of the Tablet/ PC and the probe

• DURING a Testing Session

- Connect and check the Bluetooth link before beginning
- Climb the tower
- Press the push-button on the probe (if required after timeout)
- Scan one insulator (see Scanning Procedure on next page)
- Press the **Download** button on the Tablet/ PC
- Press the **TAG** button and select an identification
- Press the **Graphic** button
- Press the **Accept** or **Reject** button
- Press the **Alert** button to give instructions to the person at the top of the tower
- Repeat scan, **Download**, **TAG**, **Graphic** and **Accept** for each insulators in the tower
- Press **Close** to save power when all insulators are tested
- Switch probe **OFF**

Basic Instructions

When in the field, ensure that the Tablet/PC WiFi is disabled

- Switch probe **ON**
- Insert Bluetooth transmitter with switch in **DCE** mode

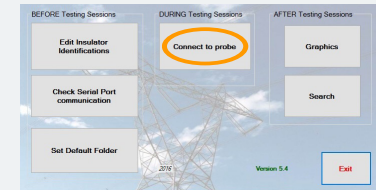
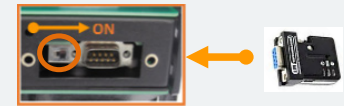
Mount probe on sled

While the Probe is at ground level, launch the Insulator Tester Software on the Tablet/ PC and select **Connect to probe**

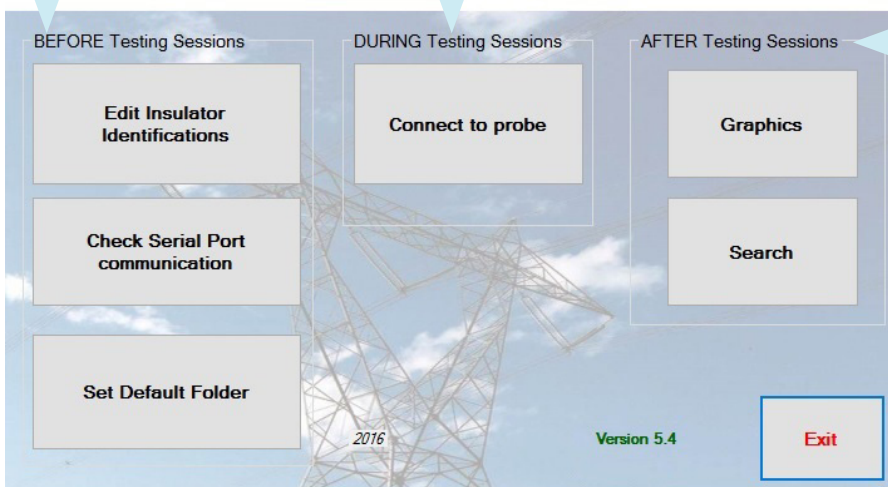
Select the COM Port

Ensure probe is in Awake Mode by pressing on the push button

Attach the probe's sled to the hot stick



Position Insulator Tester



• AFTER a Testing Session

- Press the **Graphics** button to display any insulator's data
- Press **Search** to find all graphics related to a given insulator showing its degradation over time

Notes:

- Practice manipulations of the tester can be done while Bluetooth communication is active and the probe is in Sleep Mode
- The probe will go to Sleep Mode after eight (8) minutes of non-communication, press the probe's button to awaken it